

CASE LOG TOTALS

[Go To Main Menu](#)

OPTIONAL FILTERS

Date Range: From  To  [Clear Filters](#)

Semester:

Course:

Clinical Site:

Preceptor:

Item Filter #1:

Item Filter #2:

Click for a list of cases where that category was marked. Cases with a "Not Approved" status are not included in these totals.

Total Cases Entered: 675

Total Unique Patients: 675

Total Days with Cases: 103

Total Patient Hours: 292.3 (+ 22.7 Total Consult Hours = ~314.9 Hours)

Average Case Load per Case Day: 6

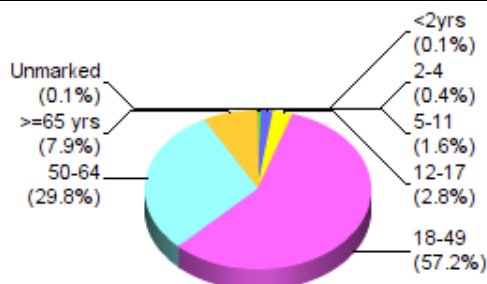
Average Time Spent with Patients: 26 minutes

Rural Visits: 0 patients

Underserved Area/Population: 475 patients

Group Encounters: 0 sessions

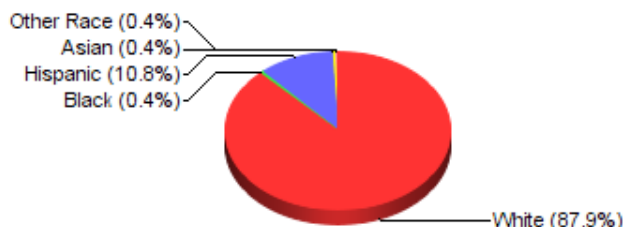
AGE	Ct	Hrs
<2 yrs:	1	0.3
2-4 yrs:	3	0.9
5-11 yrs:	11	4.0
12-17 yrs:	19	10.1
18-49 yrs:	386	176.1
50-64 yrs:	201	81.8
>=65 yrs:	53	19.1
Unmarked:	1	0.0



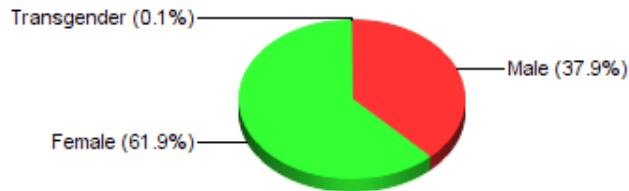
Infant Breakdown	Ct	Hrs
Prenatal:	0	0.0
0-3 mo:	0	0.0
4-6 mo:	1	0.3
7-12 mo:	0	0.0
13-18 mo:	0	0.0
19-23 mo:	0	0.0

Geriatric Breakdown	Ct	Hrs
65-74 yrs:	48	17.9
75-84 yrs:	4	0.9
85-89 yrs:	1	0.3
>=90 yrs:	0	0.0

RACE	Ct
White Non-Hispanic:	593
Black:	3
Hispanic:	73
Asian:	3
Amer Indian/Alaskan:	0
Hawaiian/Pacific Isl:	0
Other Race:	3
Unmarked:	0

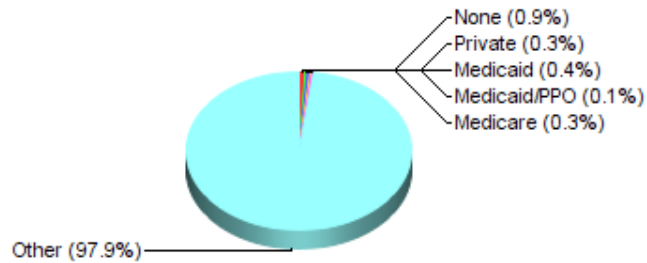


GENDER	Ct
Male:	256
Female:	418
Transgender:	1
Unmarked:	0



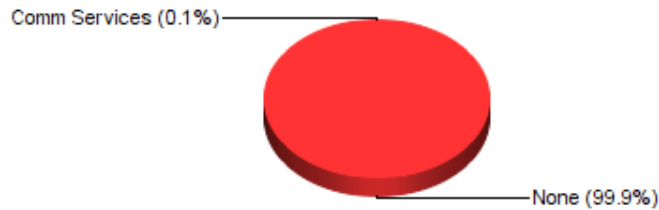
#### INSURANCE

None:	6	
HMO:	0	
PPO:	0	
Private:	2	
Medicaid:	3	
Medicaid/HMO:	0	
Medicaid/PPO:	1	
Medicare:	2	
Medicare/HMO:	0	
Medicare/PPO:	0	
Dual Eligible:	0	
Work Comp:	0	
Other:	661	
Unmarked:	0	



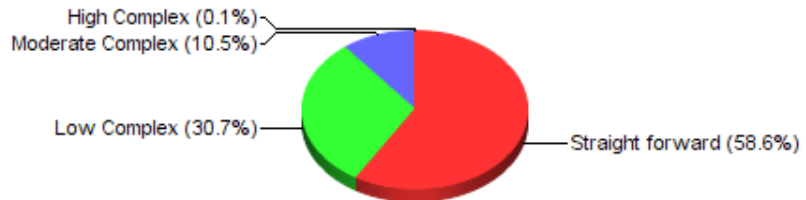
#### REFERRALS

None:	674	
Allied Health:	0	
Cert Nurse Spec:	0	
Comm Services:	1	
Mental Health:	0	
Nurse Pract:	0	
Nutritionist:	0	
Occupat Ther:	0	
Physical Ther:	0	
Physician:	0	
Physician Asst:	0	
Other:	0	
Unmarked:	0	



#### TYPE OF DECISION-MAKING

Straight forward:	395	
Low Complex:	207	
Moderate Complex:	71	
High Complex:	1	
Unmarked:	0	



#### STUDENT PARTICIPATION

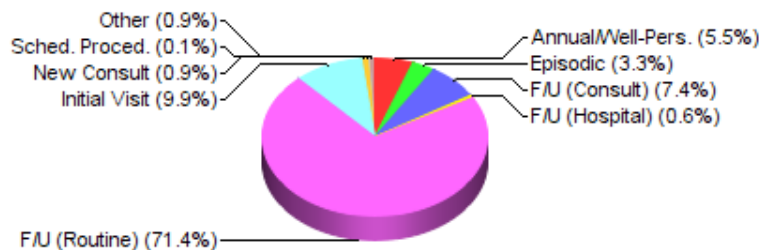
Observ. Only:	448	
Less than shared:	21	
Shared:	55	
Primary (>50%):	151	
Unmarked:	0	



#### REASON FOR VISIT

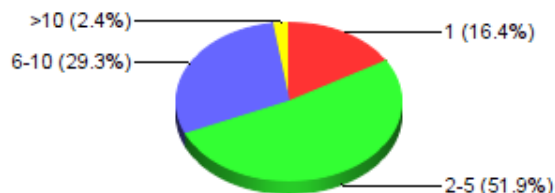
Annual/Well-Person Exam:	37	
Employment Physical:	0	
Episodic:	22	
ER/ED Visit:	0	
Follow-up (Consult):	50	
Follow-up (Hospital Visit):	4	

Follow-up (Routine):	482
Initial Visit:	67
Long Term Care:	0
New Admit:	0
New Consult:	6
Nursing Home Visit:	0
Pt/Fam.Ed./Counseling:	0
Scheduled Procedure:	1
Screening/Health Promo:	0
Sports Physical:	0
Other:	6
Unmarked:	0



#### ENCOUNTER #

1:	111
2-5:	350
6-10:	198
>10:	16
Unmarked:	0



#### TYPE OF H & P

Problem Focused:	601
Expanded Prob. Focused:	25
Detailed:	7
Comprehensive:	41
Unmarked:	0



#### SOC. PROBLEMS ADDRESSED

Abused Child/Adult:	40	40	Abused Child/Adult
Caretaking/Parenting:	18	18	Caretaking/Parenting
Education/Language:	13	13	Education/Language
Emotional:	342	342	Emotional
Grief:	28	28	Grief
Growth/Development:	12	12	Growth/Development
Housing/Residence:	54	54	Housing/Residence
Income/Economic:	21	21	Income/Economic
Interpersonal Relations:	107	107	Interpersonal Relations
Issues w/Community Help:	7	7	Issues w/Community Help
Legal:	44	44	Legal
Neglected Child/Adult:	0	0	Neglected Child/Adult
Nutrition/Exercise:	37	37	Nutrition/Exercise
Palliative/End of Life:	0	0	Palliative/End of Life
Prevention:	14	14	Prevention
Role Change:	2	2	Role Change
Safety:	27	27	Safety
Sanitation/Hygiene:	5	5	Sanitation/Hygiene
Sexuality:	9	9	Sexuality
Social Isolation:	16	16	Social Isolation
Spiritual Issues:	6	6	Spiritual Issues
Substance Abuse:	82	82	Substance Abuse
Other:	1	1	Other

#### PROCEDURES/SKILLS

The minimum requirements are optionally entered by the administrator. Items with minimums will appear in red if the minimum has not been met, and will turn to blue once the minimum has been met. Critical items in bold.

**General Skills**

OBSERVED	ASSISTED	PERFORMED	MIN. REQUIRED	DESCRIPTION
0	0	0		Arthrocentesis
0	0	0		Biopsy excisional
0	0	0		Biopsy punch
0	0	0		Biopsy shave
0	0	0		Breast exam
0	0	0		Bronchoscopy
0	0	0		Burn debridement
0	0	0		Cardiovascular risk assessment/management
0	0	0		Casting/Spinting
0	0	0		Cerumen disimpaction
0	0	0		Cryotherapy
0	0	0		Cultures/swabs/wet mount
0	0	0		Curumen Disimpaction
0	0	0		Diabetic foot exam/care
0	0	0		Ear lavage
0	0	0		EKG interpretation
0	0	0		Epistaxis and nasal packing
0	0	0		Exam of eye for foreign body
0	0	0		Feeding tube placement
0	0	0		Fetal monitoring/Prenatal exam
0	0	0		Foreign body removal
0	0	0		Fracture immobilization
0	0	0		Incision & Drainage
0	0	0		Ingrown Toenail Removal
0	0	0		Insert arterial line
0	0	0		Insert central line
0	0	0		Insert chest tube
0	0	0		Insert Swan-Ganz catheter
0	0	0		Intra-articular Injections
0	0	0		Intubation
0	0	0		Laboratory studies interpretation
0	0	0		Laser hair removal
0	0	0		Male reproductive health & STI screening/mngmnt
0	0	0		Microscopy
0	0	0		Newborn exam
0	0	0		Obesity & Health maintenance management
0	0	0		Prostate examination
0	0	0		Pulmonary artery catheter
0	0	0		Pulmonary Function Test and Interpretation
0	0	0		Screen/manage sleep disorders
0	0	0		Suturing
0	0	0		Use of microscope and slide preparation
0	0	0		Wet mount preparation and interpretation
0	0	0		Wound management
0	0	0		X-Ray, CT, MRI, US, Imaging Interpretation

**Dermatology**

OBSERVED	ASSISTED	PERFORMED	MIN. REQUIRED	DESCRIPTION
0	0	0		Biopsy, Excisional
0	0	0		Biopsy, Punch
0	0	0		Biopsy, Shave
0	0	0		cryotherapy/wart removal
0	0	0		stapling
0	0	0		Suturing
0	0	0		Use of microscope and slide preparation

**TOP 25 ICD-10 DIAGNOSIS CATEGORIES** ([View All Categories](#)) ([View All Full Codes](#))

TOTAL	DESCRIPTION [Click category for detail]
285	<a href="#">F41</a> - OTHER ANXIETY DISORDERS
226	<a href="#">F33</a> - MAJOR DEPRESSIVE DISORDER, RECURRENT
177	<a href="#">F31</a> - BIPOLAR DISORDER
137	<a href="#">F43</a> - REACTION TO SEVERE STRESS, AND ADJUSTMENT DISORDERS
65	<a href="#">R41</a> - OTH SYMPTOMS AND SIGNS W COGNITIVE FUNCTIONS AND AWARENESS

63	<a href="#">F25</a> - SCHIZOAFFECTIVE DISORDERS
59	<a href="#">F90</a> - ATTENTION-DEFICIT HYPERACTIVITY DISORDERS
44	<a href="#">F20</a> - SCHIZOPHRENIA
36	<a href="#">F51</a> - SLEEP DISORDERS NOT DUE TO A SUBSTANCE OR KNOWN PHYSIOL COND
28	<a href="#">F10</a> - ALCOHOL RELATED DISORDERS
26	<a href="#">F42</a> - OBSESSIVE-COMPULSIVE DISORDER
24	<a href="#">F11</a> - OPIOID RELATED DISORDERS
24	<a href="#">F32</a> - MAJOR DEPRESSIVE DISORDER, SINGLE EPISODE
18	<a href="#">F60</a> - SPECIFIC PERSONALITY DISORDERS
15	<a href="#">F40</a> - PHOBIC ANXIETY DISORDERS
10	<a href="#">E11</a> - TYPE 2 DIABETES MELLITUS
10	<a href="#">I10</a> - ESSENTIAL (PRIMARY) HYPERTENSION
8	<a href="#">Z00</a> - ENCNTN FOR GENERAL EXAM W/O COMPLAINT, SUSP OR REPRTD DX
6	<a href="#">F12</a> - CANNABIS RELATED DISORDERS
6	<a href="#">F71</a> - MODERATE INTELLECTUAL DISABILITIES
5	<a href="#">F06</a> - OTHER MENTAL DISORDERS DUE TO KNOWN PHYSIOLOGICAL CONDITION
4	<a href="#">F19</a> - OTHER PSYCHOACTIVE SUBSTANCE RELATED DISORDERS
4	<a href="#">F84</a> - PERVASIVE DEVELOPMENTAL DISORDERS
4	<a href="#">M54</a> - DORSALGIA
3	<a href="#">A49</a> - BACTERIAL INFECTION OF UNSPECIFIED SITE

---

### TOP 25 CPT BILLING CODES ([View All](#))

TOTAL	DESCRIPTION
304	99214 - OFFICE/OP VISIT, EST PT, MEDICALLY APPROPRIATE HX/EXAM; MODERATE LEVEL MED DECISION; 30-39 MIN
245	99213 - OFFICE/OP VISIT, EST PT, MEDICALLY APPROPRIATE HX/EXAM; LOW LEVEL MED DECISION; 20-29 MIN
33	99207 is not a valid CPT code.
16	90792 - PSYCHIATRIC DIAGNOSTIC EVALUATION W/MEDICAL SERVICES
12	0521F - PLAN OF CARE TO ADDRESS PAIN DOCD
10	4050F - HYPERTENSION PLAN OF CARE DOCUMENTED
3	1026F - CO-MORBID CONDITIONS ASSESSED
3	99318 - E/M OF PATIENT INVOLVING ANNUAL NURSING FACILITY ASSESSMENT
2	2029F - COMPLETE PHYSICAL SKIN EXAM PERFORMED
2	3210F - GROUP A STREP TEST PERFORMED
2	58300 - INSERTION, INTRAUTERINE DEVICE
2	81506 - ENDOCRINOLOGY BIOCHEMICAL ASSAY SEVEN ANALYTES
2	90791 - PSYCHIATRIC DIAGNOSTIC EVALUATION
2	97169 - ATHLETIC TRAINING EVALUATION; LOW COMPLEX 15 MINS
2	97750 - PHYSICAL PERFORMANCE TEST, W/WRITTEN REPORT, EACH 15 MIN
2	99381 - INITIAL COMPREHENSIVE PREVENTIVE MEDICINE E&M W/HX/EXAM, NEW PT; INFANT < 1 YR
1	0012F - COMMUNITY-ACQUIRED BACTERIAL PNEUMONIA ASSMT
1	1006F - OSTEOARTHRITIS SYMPTOMS&FUNCJAL STATUS ASSES
1	1125F - PAIN SEVERITY QUANTIFIED PAIN PRESENT
1	11305 - SHAVING SKIN LESION, SCALP/NECK/HANDS/FEET/GENITALIA; DIAMETER 0.5 CM/<
1	1135F - EPISODE OF BACK PAIN LASTING LONGER THAN SIX WKS
1	1220F - PATIENT SCREENED FOR DEPRESSION
1	17111 - DESTRUCTION, FLAT WARTS, MOLLUSCUM CONTAGIOSUM/MILIA; 15 +
1	2000F - BLOOD PRESSURE, MEASURED
1	3066F - DOCUMENTATION OF TREATMENT FOR NEPHROPATHY

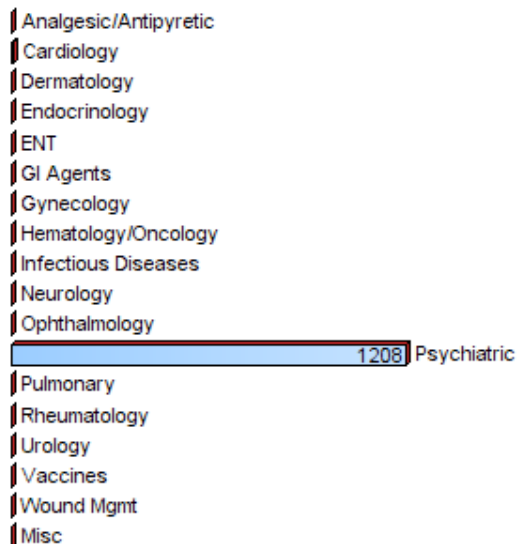
---

### PRESCRIPTIONS WRITTEN BY CATEGORY [Click category for detail]

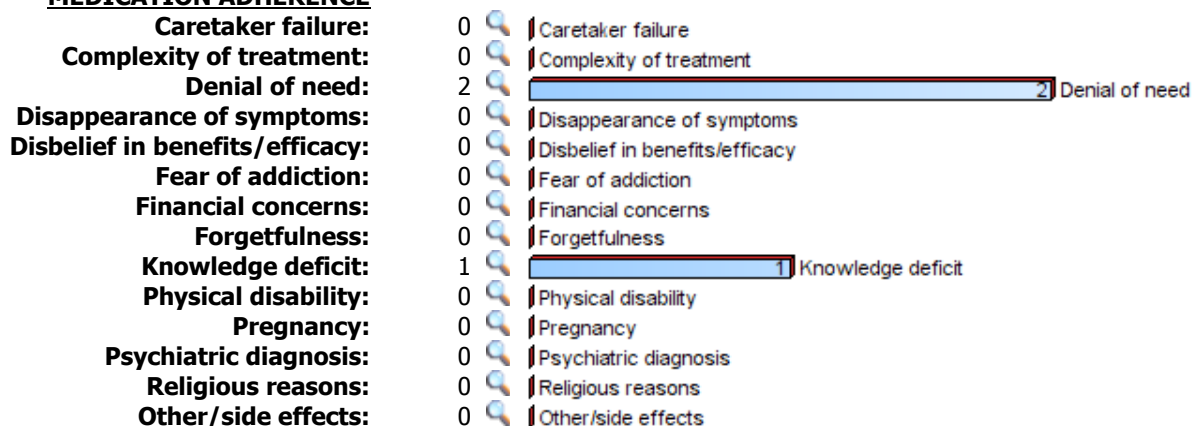
#### TOTAL CATEGORY

1	<a href="#">Analgesic &amp; Antipyretic</a>
4	<a href="#">Cardiology</a>
1	<a href="#">Dermatology</a>
2	<a href="#">Endocrinology</a>
0	<a href="#">ENT</a>
0	<a href="#">GI Agents</a>
0	<a href="#">Gynecology</a>
0	<a href="#">Hematology/Oncology</a>
0	<a href="#">Infectious Diseases</a>
0	<a href="#">Neurology</a>
0	<a href="#">Ophthalmology</a>
1208	<a href="#">Psychiatric</a>
0	<a href="#">Pulmonary</a>
0	<a href="#">Rheumatology</a>
0	<a href="#">Urology</a>

0 [Vaccines](#)  
 0 [Wound Management](#)  
 1 [Miscellaneous](#)



### **MEDICATION ADHERENCE**



\*\*\*Report generated 4/4/2021 2:46:30 PM CT\*\*\*